

ENGINEERED FLOW PRODUCTS & SYSTEMS

Flowlink BV is an engineering and technical trading company which is committed to deliver and support high-quality products in the chemical, petrochemical, plastics and food industry. Together with our partners we design and develop solutions in the field of fluid handling and fluid transport.

Our services:

- Pump selection and delivery
- Redesign of pumps for use in your situation
- Process technology
- Service and maintenance

Our products:

- Gear / Lobe Pumps
- Static Mixers
- Heat-Exchangers
- Dosing and mixing systems
- Continuous Reaction Systems

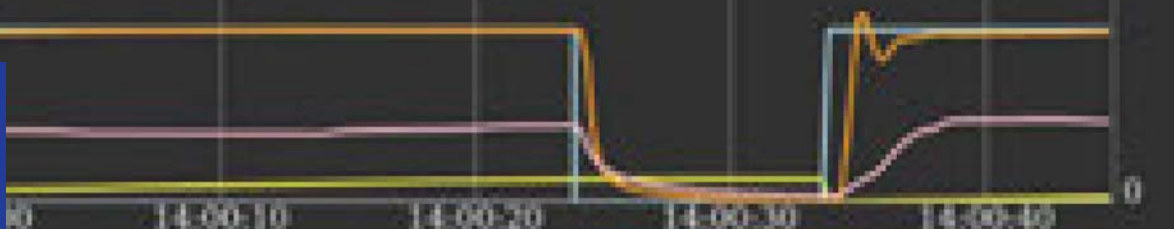
Process Technology:

- Process Intensification
- Additive/Gas injection in polymers
- Polymerization
- Batch to Continuous transitions

Because we understand that no installation and process requirement is the same we gladly work with you to find the right solution for your application.

Flowlink BV
Minervum 7446-A
4817ZG Breda
Nederland

Tel: +31 76 5289844
E-mail: info@flowlink.nl
Internet: www.flowlink.nl



Flow-Connect

The Flowlink Flow-Connect is a versatile flow controller which is capable of connecting almost any pump to any flowmeter to create a control loop. Making it very easy to Control Your Flow!



Table enclosure Flow-Connect with micro dosing pump and coreolis flowmeter for accurate ml dosing.

Flow-Connect in a nutshell

Pump and flow controller for all kinds of applications. Suitable from a <ml/min to thousands of l/hr. All depends on the connected pump and flowmeter. The integrated PID controller brings the pump speed up to the desired flowrate.

Input/output

Pump speed control output

- 0-10 Volt
- 4-20 mA
- RS-485 (optional)

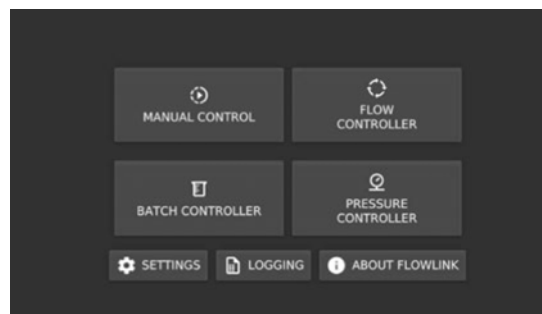
Flowmeter and additional sensor input

- Pulse (flowmeter only)
- 0-10 Volt
- 4-20 mA
- RS-485 (optional)

4 Control modes

The Flow-Connect is standard equipped with 4 flow control modes:

- Pump Control
0-100% speed control
- Flow Control
Accurate capacity control via flowmeter
- Batch Control
Dose a preset amount of fluid
- Other Sensor Control
Eq. pressure/temperature control



Pump Control

In pump control mode the pump speed can be adjusted between 0 and 100%. If a flowmeter is connected, the flow will be displayed and registered. When an additional sensor is connected this will also be displayed.



Pump Control mode - Pump speed can be controlled between 0 and 100%



Flow Control

In Flow Control mode, the Flow Connect will control the pump speed to reach the desired flowrate. The pump will start and based on the flowmeter output, the pumpspeed is adjusted until it reaches the preset capacity. Due to the built in PID controller the flow is maintained, even if the conditions, like for instance back pressure, change. This will ensure a constant flow of your system, under any condition.

Batch Control

With Batch Control, the Flow-Connect will control the flow volume to reach the desired dose volume. The pump will started and based on the flowmeter output, the batch counter will control the pump. When the flow comes near the preset batch limit the pump is shutdown. The system monitors the system behavior and adjusts the shutdown time to adjust any offset for the next batch. In this way the batch controller is very accurate since it will automatically adjust.

Alternative Sensor Control

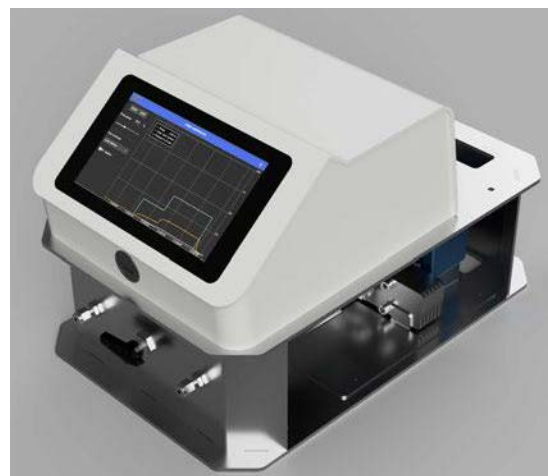
The Flow-Connect also has the ability to work with an additional sensor. This can for instance be a pressure or temperature sensor. Besides registration it is also possible to control the flow to a preset value of this additional sensor. With this a constant pressure or temperature can be held.

Additional setting and Features

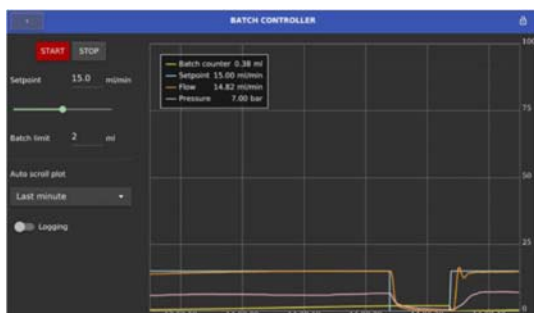
- Logging
 - Capture operating data in a .csv file format
- Alarms
 - Min/Max Alarm, Response Alarm
 - Automatic or manual shut-off function on alarm
- Auto-tune PID function
 - The Auto-tune function makes the PID set-up very easy. The tune function provides a solid proposal for the PID settings. Manual fine tuning can be used to optimize your preferences.
- Password protection
 - The main functionality and system settings can be protect by Password. This prevents unintended or unauthorized changes to the settings and functionality during operation.



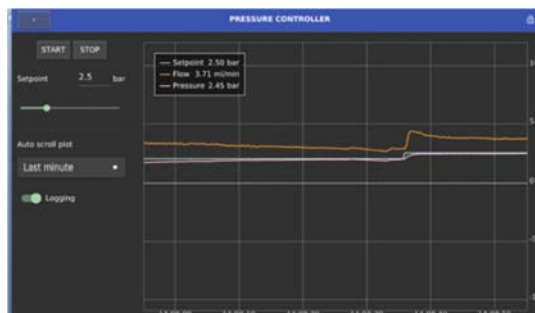
Flow Control mode - Increased or reduced back pressure is compensated automatically



Flow-Factor 2 dosing system with Flow-Connect for low volume flow control



The Batch Controller allows to accurately dose a preset fluid amount at a selected flowspeed.



Pressure Control mode - the system automatically controls the flow to the setpoint pressure



For more information & Product Videos scan the QR code to check our website